

Steel - Stahl - acier - Acciaio - acero
- сталь - Teräs - Stål - Pienas

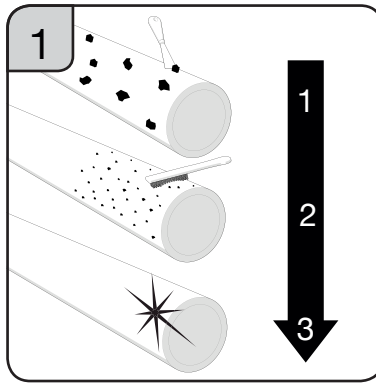
DICL - Guss - Ghisa fundición - Чугун
- GY - Valurauta - Støpejern - Kalusis ketus

PE - ПЭ

PVC - ПВХ

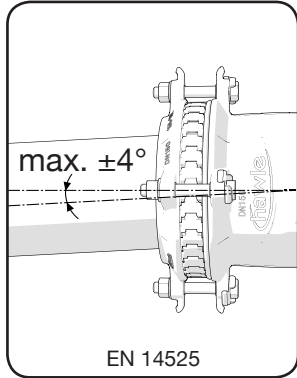
AC - AZ - Asbestrør - Asbestcement - Asbestimentti - Asbocementas

INFO



1a PE ≥ SDR 17
No. 6035

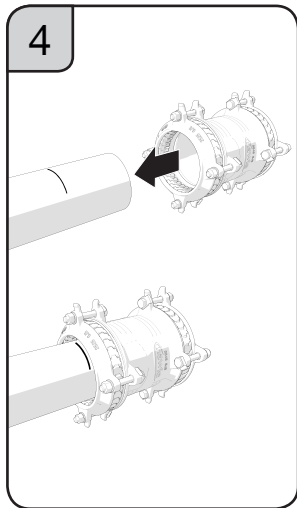
Support liners
Stützbüchse
Viroles pour
Boccola
Casquillo refuerzo
Поддерживающая втулка
Steunbus
Tukiholki
Støttehylse
Atraminé ivoré



2

od

DN [mm]	40	50	65	80	100	125	150	200	225	250	300	350	400
DN [inch]	1½"	2"	2½"	3"	4"	5"	6"	8"	9"	10"	12"	14"	16"
od [mm]	46 - 58	56 - 71	71 - 88	85 - 105	104 - 132	131 - 160	155 - 192	198 - 230	230 - 260	265 - 310	313 - 356	352 - 396	398 - 442
Temp. [°C]	0 - 40 °C												
[bar]	16 bar											10 bar	



3

MIN. [mm]

MAX. [mm]

81	84	85	86	119	119	126	143	149	155	161	171	181
86	91	97	103	136	136	143	161	161	167	180	190	200

EN 14525

5

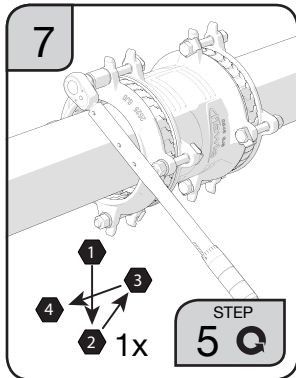
1x

Bolts	M12	M12	M12	M12	M16	M16	M16	M16	M20	M20	M20	M20	M20
[mm]	19	19	19	19	24	24	24	24	30	30	30	30	30
GJS/steel [Nm]	50	70	70	70	90	90	110	110	130	130	130	140	140
PE/PVC/AC [Nm]	40	60	60	60	70	70	80	80	110	110	110	120	120

6

30 min. МИН.

Important
Wichtig
importante
важный
Belangrijk
Tärkeää
Viktig



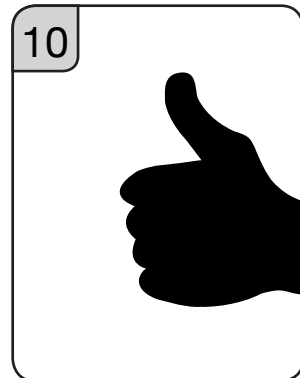
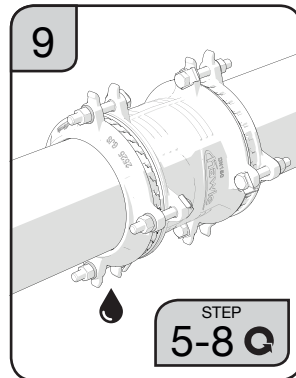
8

Pressure test
Druckprüfung
essais de pression
pressione di prova
prueba de presión
Гидравлические испытания
Druktest
Painekoe
Tryktest
Hidraulinis bandymas

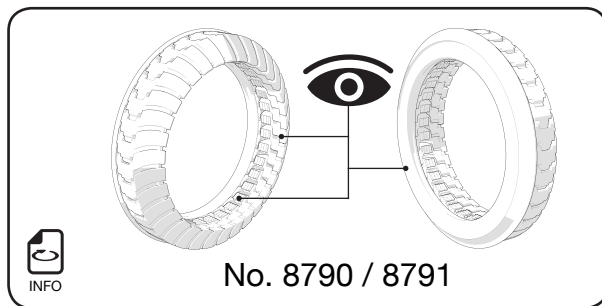
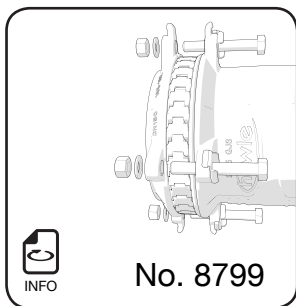
bar

max PN = PN x 1,5

EN 805



re-use
Wiederverwendung
la reutilización
riciclo
réemploi
вторичное использование
Hergebruik
Uudelleenkäyttö
Gjenvinning
Pakartotinis gaminių panaudojimas



E. Hawle Armaturenwerke GmbH
Wagrainer Straße 13
4840 Vöcklabruck, Austria

www.hawle.com

5017090
Version 2018.10

